

June 3-13, 2010

lovingGod

theLighthouse ... a Spirit-filled FAMILY  
lovingGod

We express our love to God through Worship and the Word every Sunday.  
Sunday Worship • 10.00a

**Missions/Communion/Family Worship Sunday • June 6, 2010**

Growth Groups • 9.00a • Morning Worship Service • 10.00a

**Fine Arts Presentations:** Rebecca Fleener and Brianna Falco

**Babies on Parade • Message:** Joy Headley • "The Dilemma of Decisions"

Home Groups • 6.00p

TODAY ...

- **KIDS' MINISTRIES PRAYER** • 8.30a
- **THE VILLA AT MOUNTAINVIEW NURSING HOME SERVICE** • 9:00a • If you would like to participate in this ministry, please contact the Church Office. • 214.331.6516 x102
- **PROMOTIONS SUNDAY** • All classes ages 4-18 will move up one grade in Growth Groups at 9.00a. Wednesday classes remain same until August.
- **BABIES ON PARADE** • If you want to include your nursery-age (0-3 yrs.) child(ren) in the parade, meet in nursery check-in area @ 9.40a to register your child(ren)!
- **FAMILY WORSHIP SUNDAY** • Children (ages 6 and up) will be with their families in the Sanctuary for 10.00a service • Nurseries/preschool provided • **Helpful Tips to Parents for Family Worship:** Give your children a restroom break before they enter the sanctuary • Plan to give in the offering together • Explain the importance of worshipping together — prayer, offering, sermon, and altar time.
- **HOME GROUPS** • "Never Graduate: Christ-Followers Keep on Learning and Growing" • 6.00p • A Home Group Meets in the Fireside Room. • Sign up in the Foyer.

**Family Worship Sunday, June 6 • 10.00a**



**Babies on Parade**



We will introduce your nursery-age (0-3 yrs.) child to the congregation! Meet in nursery check-in area @ 9.40a to register your child(ren)!

Sunday, June 20 — Special Drawings: \$100 gift card for Home Depot • \$50 gift card for Academy Sports & Outdoors • A day @ the lake with Pastor Gregg • Tons more ...



**Nominate Iron Men of theLighthouse** — Write a 50-100 word paragraph about the Dad you nominate. E-mail us: [info@lighthousedallas.org](mailto:info@lighthousedallas.org) or go online: [www.lighthousedallas.org/nominees.html](http://www.lighthousedallas.org/nominees.html)

**Spiritual Dad** — someone who has brought you to Christ or been a mentor and helped you grow in Christ

**Faithful Brother** — someone who has stood with you as a loyal friend through the ups and downs of life

**Super Dad** — someone who demonstrates the characteristics of our heavenly Father

**Water Baptism Next Sunday, June 13 • 10.00a**  
If you would like to be baptized, please sign up in Foyer and pick up an information/invitation packet.

growing2gether

We experience growth as we Follow Christ and Fellowship with each other.  
We grow best in small groups.

Growth Groups: Sunday • 9.00a • Wednesday • 7.00p

Home Groups: 1st & 3rd Sundays • Interest Groups: Variety of Times

FRIDAY, JUNE 4

• **MANORCARE/WILLIAMSBURG HEALTHCARE CENTER SERVICES** • 10.00a

SATURDAY, JUNE 5

• **UPWARD SOCCER GAMES** • 8.30a

• **VA HOSPITAL VISITATION** • 10.30a • Contact Ed McGee • [emcgee1270@aol.com](mailto:emcgee1270@aol.com)

SUNDAY, JUNE 6

• **PROMOTIONS SUNDAY** • All classes ages 4-18 will move up one grade in Growth Groups on Sundays at 9.00a. Wednesday classes remain same until August.

**THIS WEEK ...**

**MONDAY, JUNE 7**

- **ADVENTURE RANGERS** • 7.00p • EC-150

**TUESDAY, JUNE 8**

- **CODE BLUE WORSHIP REHEARSAL** • 5.30p • Hibbard Hall

**WEDNESDAY, JUNE 9**

- **CHOIR BREAK** • June 2-27
- **CODE BLUE SUMMER MADNESS** • 7.00p • Hibbard Hall

**WEDNESDAY NIGHTS JUNE 9 • 7.00p**

Girls • **Chick Night** • Lots of Fun • Door Prizes • KMC • Different Speaker Each Week — June 9 Susan Bozarth will be speaking on "The Timing of God" • Other Wednesday Night Speakers: Pam Falco • Joy Headley • Tangela Blain

Guys • **Man Up** • Pastor Jay Fleener/Ken Pierce • Choir Room

**Transit** • Question and Answer Forum with Pastor Headley for the month of June • Transit Room — MC223

**THURSDAY, JUNE 10**

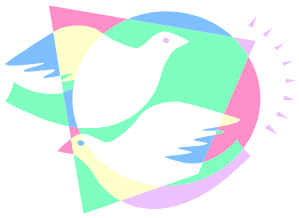
- **AN INTRODUCTION TO HERMENEUTICS** • Teacher: Brandon Biggs • Gain a deeper understanding of God's Word • Please sign up in the Foyer! • 7.00-8.30p • EC-151

**FRIDAY, JUNE 11**

- **MARRIAGE ENCOUNTER** • June 11-13 • Registration forms in Foyer

**SATURDAY, JUNE 12**

- **MISSIONS TRIP TRAINING** • 10.00a • The View



*You are invited to the wedding of Kristen Rose and Jonathan Gordon on Saturday, June 12, at 2.00p in the Sanctuary with an hors d'oeuvre reception following in Hibbard Hall.*

**servinOthers**

**servinOthers**

We encourage everyone to **Serve** God's family and to **Share** their faith.

Ministry: Finding Your Ministry • Using Your Gifts  
Missions: Sharing Your Faith • Supporting Missions

**LEGACY STORE SALE**

**ONLY 69 more** Worship Center Chairs at \$30 each • 9 color lights at \$110 each • 12 high stools for the living room at \$60 each • 5 coffee tables for the living room at \$70 each • 4 X-box game stations at \$200 each • 3 iMac computers at \$479 each  
**AVAILABLE IN FOYER!**

- **Parents: Kids' Camp** is June 20-23 • Sign up your children in the KMC
- **Mega Ministry Camp VBS** Every Wednesday Night in July • Mark Your Calendars
- **2010 North Texas District Men's Retreat** • iConnect — connecting is believing • August 12-14 • Lakeview Camp and Conference Center • Speaker: Bryan Jarrett • Sign up in Foyer • Early registration ends Sunday, July 11 • After July 11 — \$10 more
- **LCA/LLC** is now enrolling for 2010-2011 school year! • 214.339.2207
- **Angel Food** orders are due Sunday, June 13. Angel Food Ministries is running a promotion for June orders. Every person who orders any box and includes his/her e-mail address will be entered into drawing for \$500.
- **Marriage Encounter** • Building Better Marriages for Life • June 11-13 @ the Radisson DFW South, Irving TX • Registration fee: \$75 per couple • Registration Forms in Foyer
- **Girlfriend Night** • Sunday, June 27 • 6.00p • Hibbard Hall • Bring your favorite salad to share, a friend to sit with and a heart ready to connect with others.

**Sunday Schedule of Services**

Growth Groups/Sunday School • 9.00a  
Morning Worship/Children's Worship • 10.00a  
Evening Worship • 6.00p  
Second and Fourth Sunday of the Month  
Home Groups • 6.00p • First/Third Sunday of the Month  
*Casa Amistad • 1.30p • Pastor Marco Del Bosque*

**Wednesday Schedule of Services**

Code Blue Youth • 6.45-8.30p  
Choir Rehearsal • 7.00-8.15p  
Growth Groups • 7.00-8.10p  
Children's Ministries • 7.00-8.10p  
Young Adults • 7.00-8.30p

theLighthouse Office Hours • Monday-Thursday: 9.00a-4.30p • Friday: 9.00a-12.30p

**Gospel Lighthouse Church • GREGG L. HEADLEY, SENIOR PASTOR**  
5525 West Illinois Avenue • P.O. Box 210217 • Dallas, TX 75211 • 214.331.6516  
info@lighthousedallas.org • ww.lighthousedallas.org

